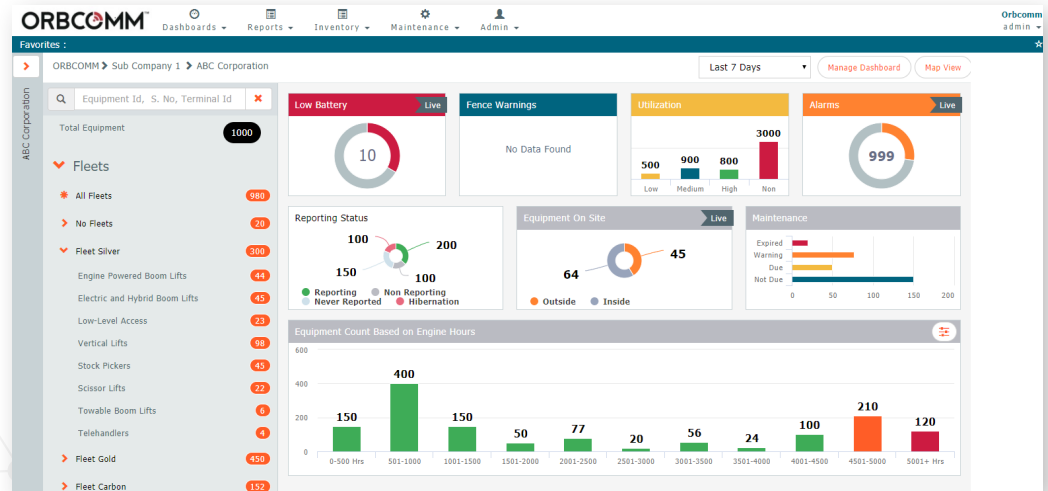


# FleetEdge

## Port Equipment Monitoring and Management



ORBCOMM's heavy equipment solution provides fleet owners with instant access to key operational data and engine diagnostics using ORBCOMM's leading-edge devices and the FleetEdge application. Data is transmitted from equipment around the globe back to the application via satellite or cellular networks for around-the-clock operational visibility.

### Features

**Custom Views and Favorites:** Use filters and customize the application to display only information that is relevant to your organization. Assign favorites for enhanced monitoring efficiency.

**Asset Location:** Know where your assets are at any time.

**Scheduled Reports:** Schedule periodic equipment status, utilization and productivity reports to track engine hours and other operational metrics.

**Custom Reports:** Create custom reports from a wide range of sensor data collected from field assets.

**Event-Based Alerts:** Receive real-time alerts via text and email when specific conditions are detected or thresholds are exceeded—engine warnings, geofence and timefence violations, low battery alerts and more.

**Maintenance Scheduling:** Set thresholds to monitor equipment performance, manage maintenance schedules and receive notifications of upcoming service appointments to enable preventative maintenance.

**Multi-Language Support:** FleetEdge supports English, Spanish, French, German, Italian, Polish, Arabic and Hebrew.

**Multi-Level Access:** Restrict access to different people in the organization based on roles for complete flexibility and control.

**Interactive Graphs and Charts:** Create custom charts and graphs from a wide range of parameters and data collected by the solution. Overlap multiple parameters for advanced analytics.

**Dynamic dashboard with custom widgets**

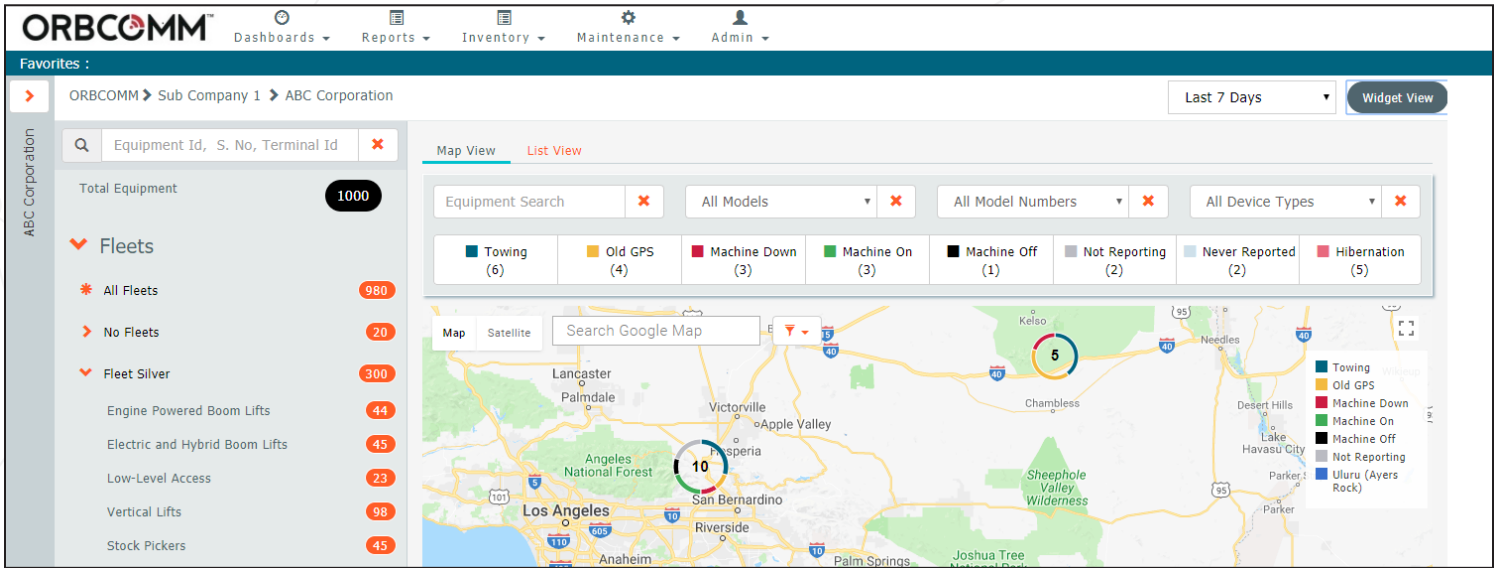
**Access to key operational metrics**

**Customizable and easy-to-use web application**

**Advanced reporting and analytics**

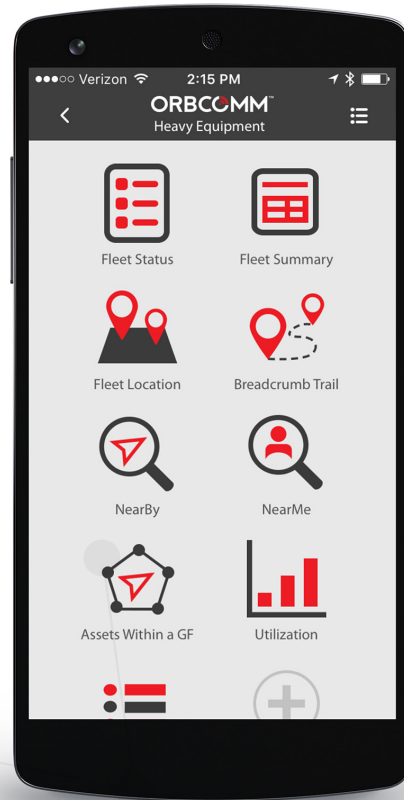
**Interactive graphs and charts**

**Multi-level administration and user access**



### FleetEdge On the Go

The ORBCOMM mobile app makes it possible for you to manage your heavy equipment on the go. Track the location of assets in real-time, monitor equipment status and utilization, receive alerts and more—all from the palm of your hand.



**CALL: 1.800.ORBCOMM    EMAIL: SALES@ORBCOMM.COM    VISIT: WWW.ORBCOMM.COM**

ORBCOMM is a global leader and innovator in the industrial Internet of Things, providing solutions that connect businesses to their assets to deliver increased visibility and operational efficiency. The company offers a broad set of asset monitoring and control solutions, including seamless satellite and cellular connectivity, unique hardware and powerful applications, all backed by end-to-end customer support, from installation to deployment to customer care. ORBCOMM has a diverse customer base including premier OEMs, solutions customers and channel partners spanning transportation, supply chain, warehousing and inventory, heavy equipment, maritime, natural resources, and government. For more information, visit [www.orbcomm.com](http://www.orbcomm.com).