

The logo for ORBCOMM, featuring the company name in a bold, black, sans-serif font. A red horizontal bar is positioned above the 'O'. The 'O' contains a red circular icon with a white signal-like pattern. A registered trademark symbol (®) is located to the upper right of the 'M'.

WHERE DATA DRIVES DECISIONS



The Smart Dry Container

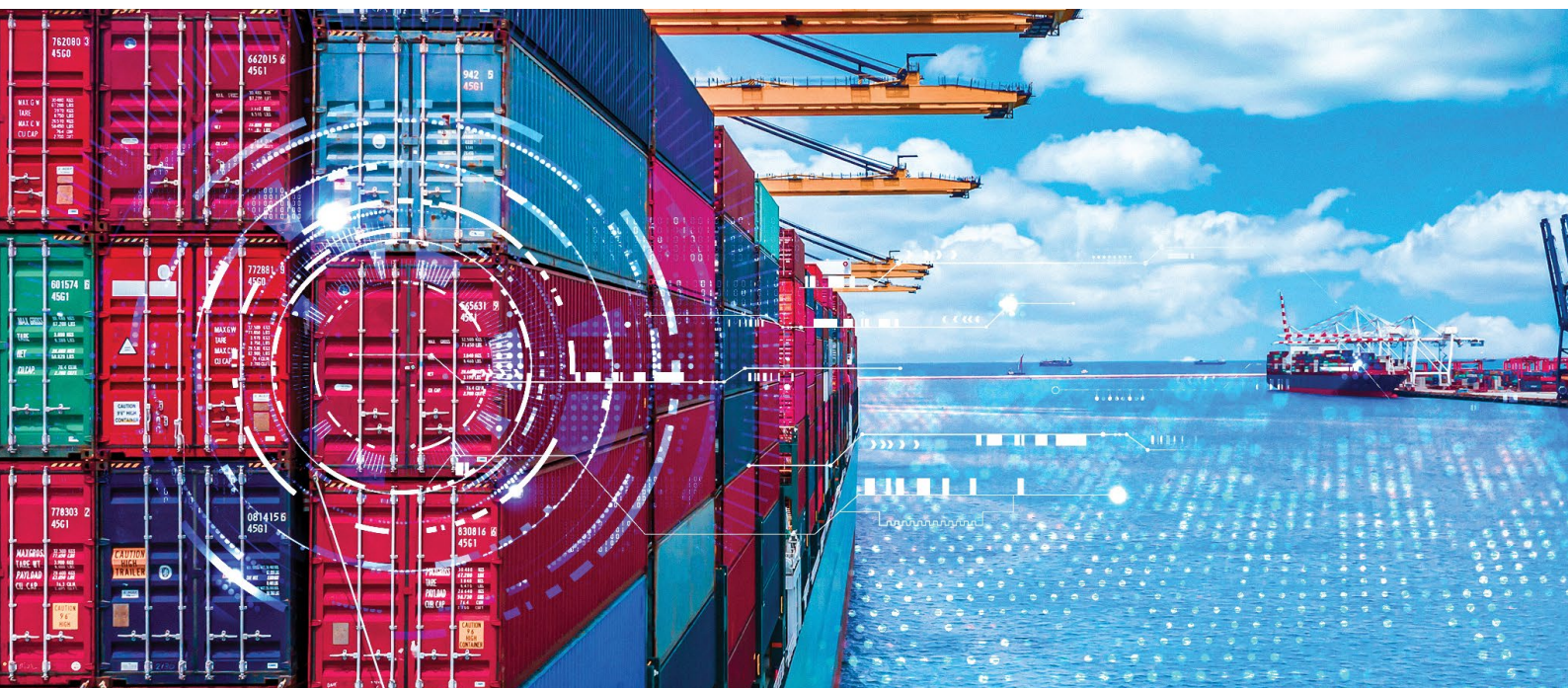
Asset visibility, cargo security and data-driven planning

The global container shipping industry faces many challenges: route disruption, port congestion, labour shortages, extreme weather and increasing demand for sustainability.

ORBCOMM's innovative smart dry container technology enables shipping lines to drive decisions with data, strengthening customer relationships, differentiating services and creating new revenue streams through complete supply chain visibility and comprehensive cargo monitoring.

The smart dry container is here

ORBCOMM's solution is the first that digitalises global dry container shipping at scale, providing visibility and traceability for shipping lines and their customers so they can turn data into decisions for their maritime operations. With asset location tracking, cargo status monitoring and issue alerts, shipping lines can optimise planning, estimate arrival times, ensure cargo security, improve asset utilisation and reduce costs, creating a more sustainable and streamlined supply chain.



Data-driven containers

Improve planning with 24/7 visibility

Get location and status at every point of every asset's journey with remote data, geofencing and historical trip reporting. Reduce planning uncertainty with shipment visibility and traceability for accurate, predictive ETAs so shippers, BCOs and 3PLs can identify issues and quickly deploy corrective measures to mitigate delays.

Enhance cargo security

Monitor cargo status to ensure a high level of delivery quality with alerts of tampering, unauthorised door opening and out-of-range temperatures, and provide proof of status at all stages of the journey to reduce insurance claims and allocate risks more accurately.

Optimise the supply chain

Minimise asset downtime and streamline distribution with early notifications of

arrival times and delays. Drive improved container utilisation by identifying usage and wait patterns on a port-by-port basis.

Safety and reliability at sea

Get uninterrupted reporting even in the harshest conditions with secure messaging, AIS compatibility and vessel-based networks. Ruggedised, explosion-proof certified and IP69k-rated solar-powered devices provide safe, secure and durable operating conditions for crews.

Strengthen customer relationships

Shipping lines can use live data, historical reporting and integration through open APIs to differentiate container services and potentially create new revenue streams with actionable analytics.

Key features

Comprehensive location reporting

GPS locations with geofence reporting and configurable reporting frequency.

Global SIM, 4G LTE and Bluetooth 5

Provides the widest coverage and lowest cost communications.

Integrated solar panel

Requires as little as 10 minutes of daily sunlight, depending on settings and operating conditions.

Long lifecycle battery

Provides up to three months of operation at 75% capacity without sun exposure.

Fast deployment

Install in as little as one minute with minimal skills and tools thanks to an intuitive design.

IP67 and IP69K rating

Robust and fully sealed to ensure the highest level of protection against dust and water for maritime applications.

Ruggedised enclosure

Withstands shock, vibrations and temperatures ranging from -40 to +85°C and built to fit narrow corrugations in containers.

Communications-ready

Connectivity I/O options for door and other BLE sensors.

“

ORBCOMM's advanced dry container solution offers the features and functionality we need to seamlessly manage our dry containers, while ensuring we **improve the efficiency, safety, profitability and customer service levels throughout our complex global supply chains.**

”

Olaf Habert

Director of Container Applications at Hapag-Lloyd



ATEX Zone 2 explosion-proof certification

Ensures safety for vessel crews and cargo.

Temperature monitoring

Ensure cargo parameters are being met with remote temperature monitoring.

AIS integration

Track assets anywhere, even underdeck and at sea, with vessel tracking and AIS integration.

Installation and commissioning tool

Activate and pair electronically with an intuitive mobile app.

Data-ready

Integrates with multiple ORBCOMM platforms and services.



Five reasons to choose ORBCOMM

1 **All in one platform**

Get a single view of all your assets—container, reefer, chassis and gensets—all on one screen. A unified view makes it easier for shipping lines to monitor, analyse, plan and optimise the entire asset journey in the supply chain on one platform.

2 **Proven**

Choose a solution proven through decades of experience and expertise—ORBCOMM developed the industry standard for remote monitoring and management of refrigerated containers and cargoes, deployed on more than 300,000 reefers worldwide. ORBCOMM's reefer tracking solutions deliver complete visibility and control for improved cargo operations.

3 **Always connected**

With our vessel-based networks, satellite-based AIS data service, refrigerated asset tracking, multiple terrestrial and satellite network technologies and 24/7 data-monitoring

services, ORBCOMM offers unmatched global coverage to support diverse use cases and mission-critical information streams, even for assets far at sea.

4 **Interoperable**

Supporting communication standards and data models set by the COA and DCSA, ORBCOMM's devices and open platforms allow easy data sharing with partners, customers and other stakeholders to integrate seamlessly with third-party devices, data streams and enterprise platforms.

5 **Innovative**

ORBCOMM multimodal solutions combine tracking and sensor hardware, connectivity services and applications to deliver complete device-to-dashboard solutions. This end-to-end approach eliminates the time, expense and headaches involved with integrating different elements from different vendors.

For more information on our solutions or to book a demo, email us at: info@ORBCOMM.com

Visit our website www.ORBCOMM.com

Although we strive to ensure accuracy in all of our published specifications, actual field performance can vary depending on a variety of environmental, installation and usage factors, as well as third-party factors such as cellular providers. The specifications listed are approximations, and do not constitute binding statements or modify the terms and conditions of purchase or lease including, but not limited to, product operational limitations and warranties. All specifications are subject to change without notice. Please check www.orbcomm.com to ensure you have the latest version of these specifications.

ORBCOMM®

WHERE DATA DRIVES DECISIONS

ORBCOMM is a pioneer in IoT technology, empowering customers with insight to make data-driven decisions that help them optimise their operations, maximise profitability and build a more sustainable future. With 30 years of experience and the most comprehensive solution portfolio in the industry, ORBCOMM enables the management of over a million assets worldwide for a diverse customer base spanning transportation, supply chain, heavy equipment, maritime, natural resources and government. For more information about how ORBCOMM is driving the evolution of industry through the power of data, visit www.orbcomm.com.